



[www.pskweb.co.uk](http://www.pskweb.co.uk)

SALES | LETTINGS | NEW HOMES | RURAL & COMMERCIAL



23 Riseley Road,  
Maidenhead Berkshire SL6 6EP  
Guide Price £260,000 Share of Freehold

# 23 Riseley Road, Maidenhead, Berkshire SL6 6EP

## Guide Price £260,000 Share of Freehold

EPC RATING C | COUNCIL BAND C |

FIRST TIME BUYERS = NIL

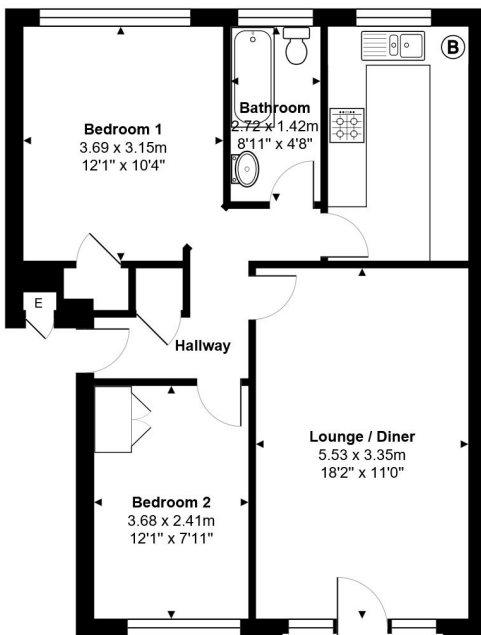
**Sought after avenue close to town**

Within walking distance of the station and town centre a spacious and well-presented first floor apartment in the popular All Saints area. The property stands in attractive well maintained grounds with extensive parking space and a garage, there are double glazed windows, gas central heating and larger than average accommodation. The property also benefits from a share of freehold.

Entrance hall: Living room with Juliette balcony: Kitchen: 2 Good sized bedrooms: Bathroom: Communal gardens:  
Garage: Share of Freehold.

### 23 Riseley Road, Maidenhead, SL6 6EP

Total Area: 60.2 m<sup>2</sup> ... 648 ft<sup>2</sup>



Whilst every attempt has been made to ensure the accuracy of the floor plans contained here, measurements of doors, windows and rooms are approximate and no responsibility is taken for any error, omission or mis-statement. These plans are for representation purposes only.

