



Hatch Place Mews
Cookham



1 Hatch Place Mews , Cookham Berkshire SL6 9FG

This beautiful three-bedroom family home, spread across three spacious levels is situated in a peaceful neighbourhood located conveniently close to local shops and stunning scenery. A welcoming foyer that opens into a bright and airy living/dining area, ideal for hosting friends or enjoying family time. This space flows into a stylish kitchen, equipped with modern countertops and appliances.

Three double sized bedrooms (two bedrooms with own en-suite bathroom) filled with natural light.

A beautifully landscaped two-tier garden, perfect for relaxing or entertaining in the fresh air.

The property boasts a prime location with convenient connections to London, perfect for commuters only 0.3 miles to the station, yet also offers a tranquil escape with beautiful countryside walks right on your doorstep.

EPC Rating: B
Council Tax Band: E

£775,000 FREEHOLD



Pike Smith & Kemp
22 Queen Street, Maidenhead
Berkshire SL7 1HZ

maidenhead@pikesmithkemp.co.uk
01628 621177

Accommodation summary

Ground floor

-LIVING / DINNING ROOM-
-KITCHEN-
-CLOAKROOM-

First floor

-MASTER BEDROOM WITH EN-SUITE-
DOUBLE BEDROOM-
-FAMILY BATHROOM-

Second Floor

- DOUBLE BEDROOM WITH EN-SUITE-

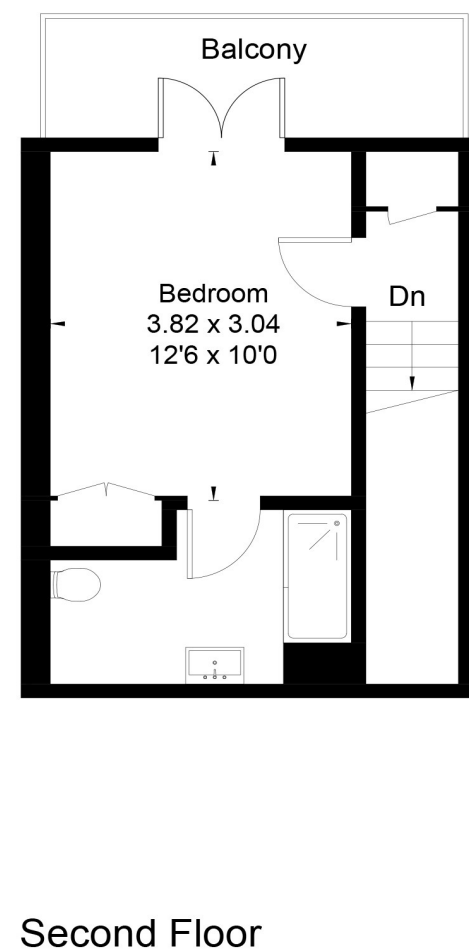
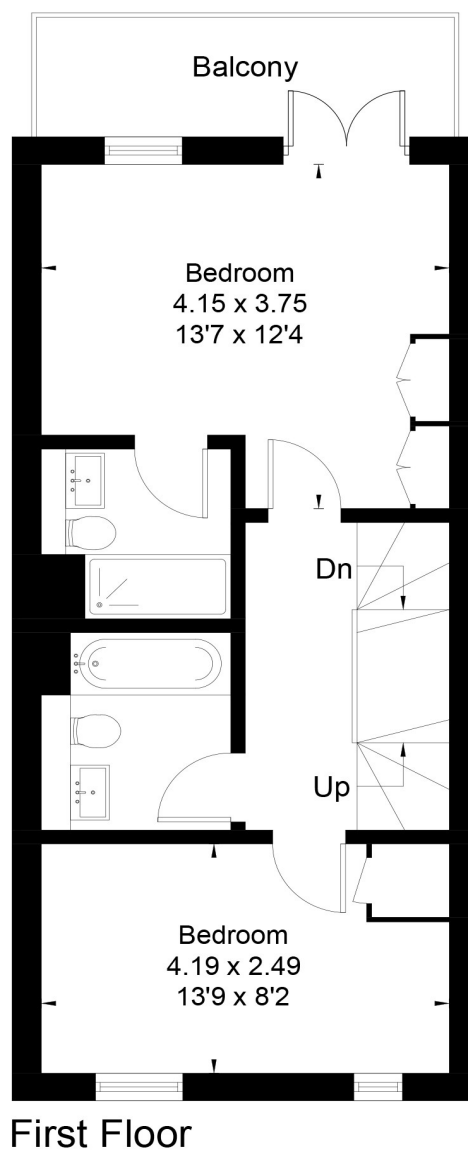
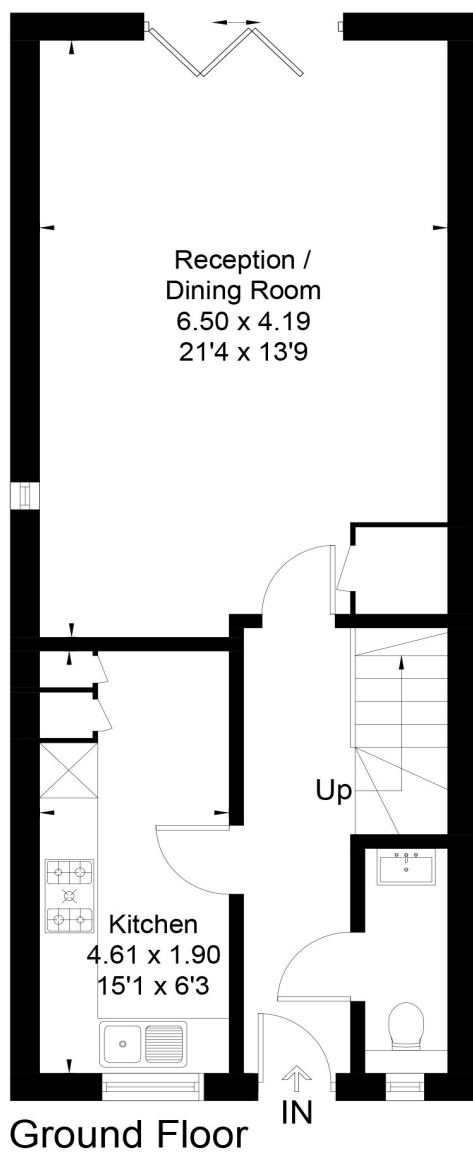
Outside

-GARDEN-
-DRIVEWAY-





Approximate Floor Area = 113.6 sq m / 1223 sq ft



This floor plan has been drawn in accordance with RICS Property Measurement 2nd edition.

All measurements, including the floor area, are approximate and for illustrative purposes only. @fourwalls-group.com #92771







■ AUCTIONEERS ■
SURVEYORS ■ P I K E ■ VALUERS ■
SMITH
KEMP
■ ESTATE AGENTS ■