



www.pskweb.co.uk

SALES | LETTINGS | NEW HOMES | RURAL & COMMERCIAL



16 Shaftesbury Court, Ludlow Road, Maidenhead, SL6 2RS
Guide Price £255,000 Leasehold

16 Shaftesbury Court, Ludlow Road, Maidenhead, Berkshire SL6 2RS

“ *SHORT STROLL TO STATION AND TOWN* ”

£255,000 Leasehold

EPC rating: D | Council tax band: D

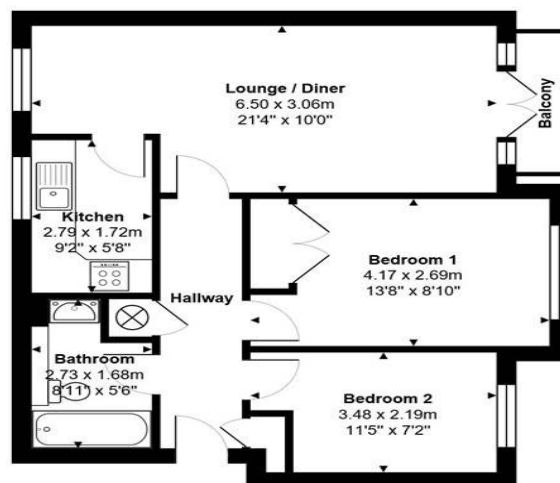
A modern purpose built second/top floor apartment on this superior gated development, within five minutes' walk of Maidenhead Railway Station and Town Centre. The property offers well-proportioned accommodation with off-street parking and is being sold with no onward chain as an ideal investment or first time purchase.

Communal entrance with security entry phone: Double aspect living/dining room: South facing balcony: Kitchen: 2 bedrooms: Modern re-fitted bathroom: Access to useful loft: Remote control security gates: Off street parking: No onward chain.

Lease length: 97 years | Maintenance charges: £1,080 per annual | Ground Rent: £200 per annual.

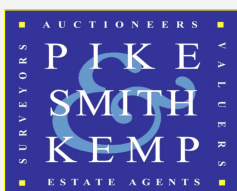
Shaftesbury Court, Maidenhead, SL6 2RS

Total Area: 53.8 m² ... 580 ft² (excluding balcony)



Whilst every attempt has been made to ensure the accuracy of the floor plans contained here, measurements of doors, windows and rooms are approximate and no responsibility is taken for any error, omission or mis-statement. These plans are for representation purposes only.

Directions: From the rear of Maidenhead railway station proceed up Shoppenhangers Road and after a short distance turn right into Ludlow Rad. Proceed to the end of Ludlow Road turning left into the gated entrance for Shaftesbury Court.



22 QUEEN STREET, MAIDENHEAD, BERKSHIRE. SL6 1HZ

01628 621177

maidenhead@pikesmithkemp.co.uk