



4 Woodhurst Road
 Maidenhead
 £1,000,000 Freehold

4 Woodhurst Road Maidenhead, Berkshire SL6 8TF

Price £1,000,000 Freehold

'A four bedroom detached house close to river area'

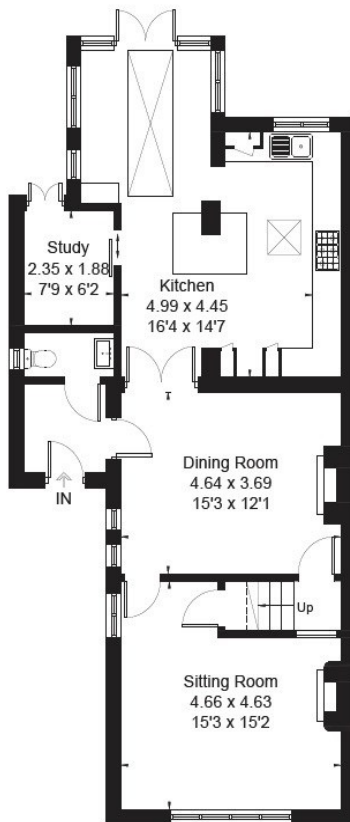
A characterful semi-detached house located in the Riverside area. Woodhurst Road has 4 double bedrooms, 2 reception, 2 bathrooms, a perfect house for family living. There is a large studio situated at the bottom of the south-west facing garden, ideal for home office or hobby area and gym. Taplow and Maidenhead train station are close by to be able to take advantage of the Elizabeth Line.

Council Tax band: F

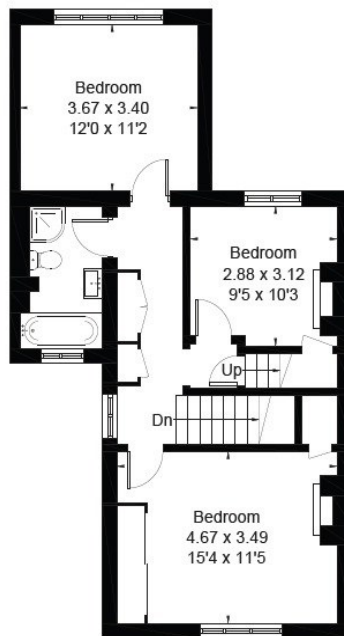
EPC rating: D

The M4 and M40 motorway are easily accessible providing access to Heathrow and Central London. Rail services to London Paddington are available from Maidenhead Station with an excellent service to London Paddington and directly into the city centre via the Elizabeth Line.

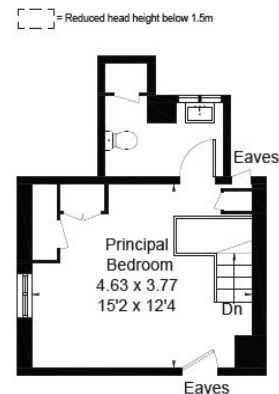
Approximate Floor Area = 163 sq m / 1754 sq ft
Studio = 14.4 sq m / 155 sq ft
Total = 177.4 sq m / 1909 sq ft



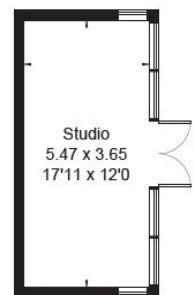
Ground Floor



First Floor



Second Floor



(Not Shown In Actual Location / Orientation)



This floor plan has been drawn in accordance with RICS Property Measurement 2nd edition.
All measurements, including the floor area, are approximate and for illustrative purposes only. @fourwalls-group.com #90128







PIKE SMITH & KEMP

22 QUEEN STREET, MAIDENHEAD, BERKSHIRE SL6 1HZ

MAIDENHEAD@PIKESMITHKEMP.CO.UK

www.pskweb.co.uk

01628 621177