



13 Lingholme Close
 Maidenhead

Guide Price £410,000 Freehold

13 Lingholme Close
Maidenhead, Berkshire, SL6 4RS

Guide Price £410,000 Freehold

"A family home in a cul-de-sac location close to local shops"

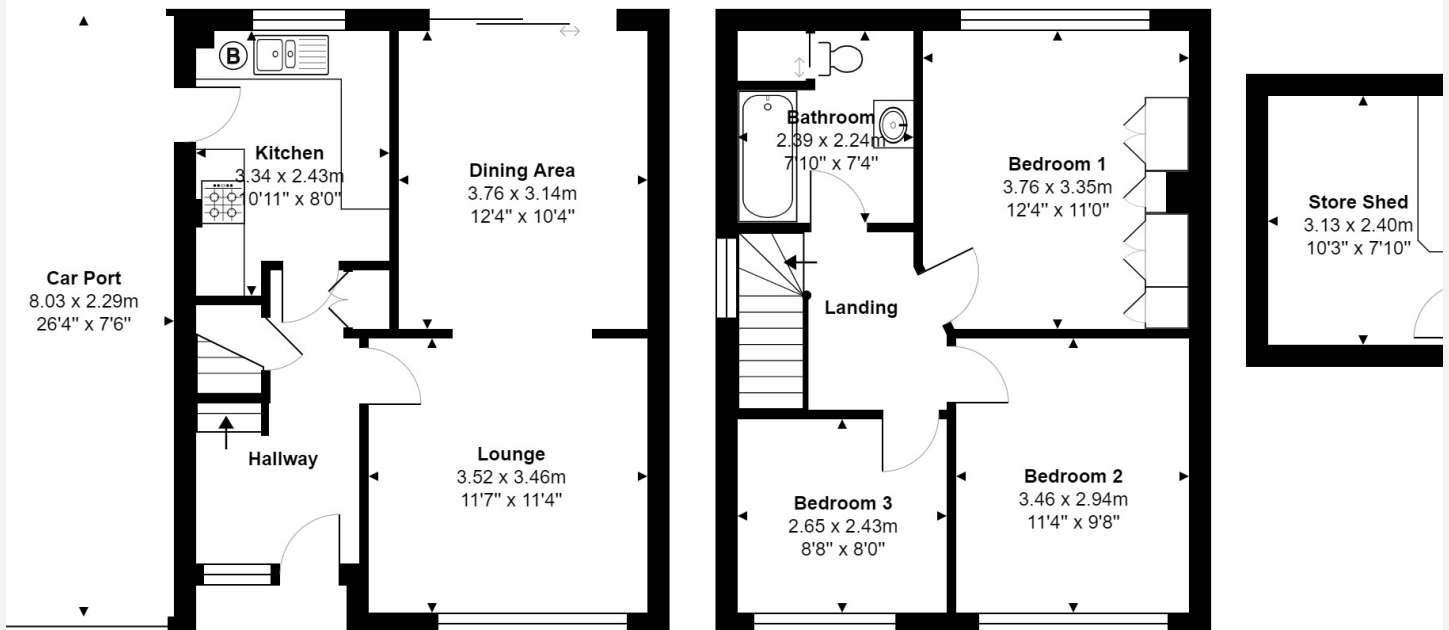
A three bedroom semi-detached house in a quiet cul-de-sac circa 1 mile west of the town and station within a few yards of a local shopping parade and well placed for popular local schools. The property, which does have some potential for improvement, benefits from driveway parking, double length carport and a pleasant enclosed rear garden with brick built shed/workshop.

**ENTRANCE HALL: LOUNGE: DINING AREA: KITCHEN: THREE BEDROOMS: BATHROOM:
CAR PORT: SHED/WORKSHOP: OFF STREET PARKING: WELL STOCKED REAR GARDEN**

EPC RATING: D

Lingholm Close, Maidenhead, SL6 4RS

Total Area: 84.3 m² ... 907 ft² (excluding store shed, car port)



Whilst every attempt has been made to ensure the accuracy of the floor plans contained here, measurements of doors, windows and rooms are approximate and no responsibility is taken for any error, omission or mis-statement. These plans are for representation purposes only.



■ AUCTIONEERS ■
P I K E
S M I T H
K E M P
■ ESTATE AGENTS ■





Directions: Leave Maidenhead on the A4 Bath Road via Castle Hill heading towards Reading. Go straight across the first two roundabouts and at the third, turn left into Wootton Way. Take the second on the left into Stamford Road and the third on the right into Lingholm Close.



PIKE SMITH & KEMP

22 QUEEN STREET, MAIDENHEAD, BERKSHIRE SL6 1HZ

MAIDENHEAD@PIKESMITHKEMP.CO.UK

01628 621177