



68 Alwyn Road  
Maidenhead

Price: £650,000 Freehold



# 68 Alwyn Road Maidenhead, Berkshire SL6 5EL

Price £650,000 Freehold

## *'A three bedroom home in need of modernisation'*

In need of updating and improvement with potential for extension (stpp). A 1920's three bedroom detached house with a large rear garden with detached studio, out buildings and garage. Located in an established residential road on the north westerly outskirts of Maidenhead, close to Pinkneys Green and within walking distance of both Newlands and Furze Platt schools with Maidenhead town centre and railway station less than one and half miles away.

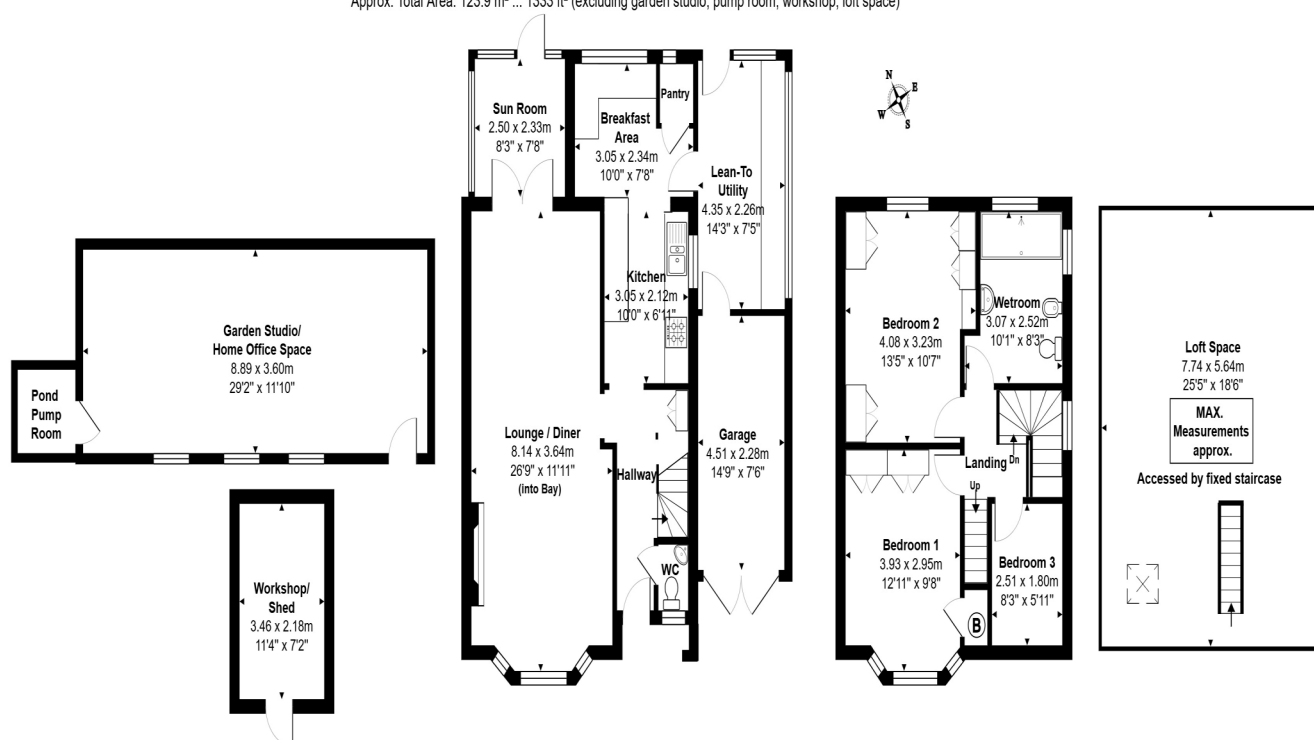
The house is being sold with no onward chain.

**Council Tax band: E      EPC rating:**

The M4 and M40 motorway are easily accessible providing access to Heathrow and Central London. Rail services to London Paddington are available from Maidenhead Station with an excellent service to London Paddington and directly into the city centre via the Elizabeth Line.

### 68 Alwyn Road, Maidenhead, SL6 5EL

Approx. Total Area: 123.9 m<sup>2</sup> ... 1333 ft<sup>2</sup> (excluding garden studio, pump room, workshop, loft space)



Whilst every attempt has been made to ensure the accuracy of the floorplans contained here, measurements of doors, windows and rooms are approximate and no responsibility is taken for any error, omission or mis-statement. These plans are for representation purposes only.









**PIKE SMITH & KEMP**

22 QUEEN STREET, MAIDENHEAD, BERKSHIRE SL6 1HZ

MAIDENHEAD@PIKESMITHKEMP.CO.UK

[www.pskweb.co.uk](http://www.pskweb.co.uk)

01628 621177