



36 Westborough Road
Maidenhead
Price £375,000 Freehold

36 Westborough Road
Maidenhead
Berkshire, SL6 4AR

Price £375,000 Freehold

EPC Rating: D
Council Tax Band: E

'An older style home in a residential road requiring modernisation offered onto the market with no onward chain'

A 3 bedroom semi-detached house conveniently located for schooling and Boyn Grove Park. The property benefits from a 70ft. west facing garden and off street parking.

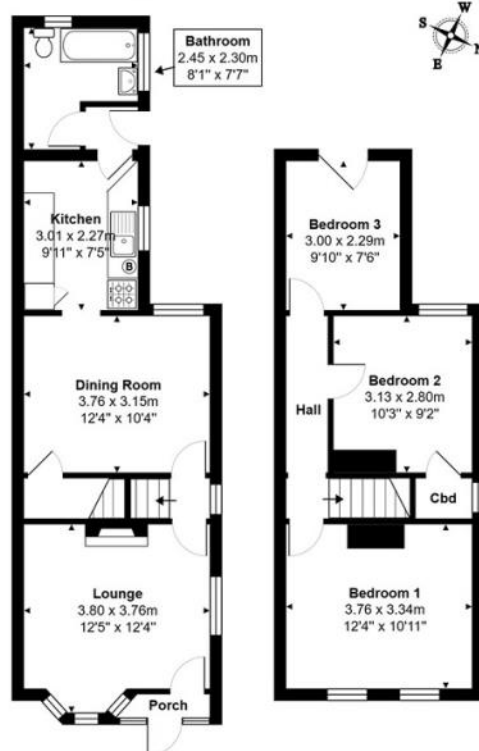
NO ONWARD CHAIN.

The M4 motorway are easily accessible providing access to Heathrow and Central London. Rail services to London Paddington are available from Maidenhead Station with an excellent service to London Paddington, serviced by the Elizabeth Line.

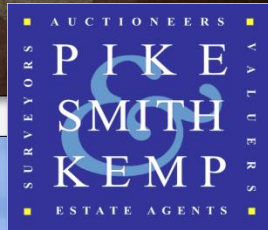
**SITTING ROOM: DINING ROOM: KITCHEN: INNER LOBBY: BATHROOM: THREE BEDROOMS:
: ENCLOSED GARDEN: PARKING**

Westborough Road, Maidenhead, SL6 4AR

Approx. Total Area: 78.9 m² ... 850 ft²



Whilst every attempt has been made to ensure the accuracy of the floorplans contained here, measurements of doors, windows and rooms are approximate and no responsibility is taken for any error, omission or mis-statement. These plans are for representation purposes only.





DIRECTIONS: From Maidenhead town centre proceed east along the A4 and turn right at the traffic lights, just after the shops on the left, into Oldfield Road where The Farthingales will be found on the left hand side, turn left again where Sadlers Mews will be found in the pedestrian area on the left.



PIKE SMITH & KEMP

22 QUEEN STREET, MAIDENHEAD, BERKSHIRE SL6 1HZ

MAIDENHEAD@PIKESMITHKEMP.CO.UK

01628 621177