



**‘OAKLEY COTTAGE’
COOKHAM DEAN**



**'OAKLEY COTTAGE'
COOKHAM DEAN, SL6 9UD**

An attractive individual detached five bedroom house in Cookham Dean. Situated in an elevated position with views over farmland and mature west facing gardens of c. half an acre. The garden backs on to fields, owned by this house and neighbouring residents. Situated in close proximity to Marlow and Cookham Rise, with branch line station serving Paddington and Central/East London via Crossrail (2020) and easy access to M4/M25/M40/Heathrow airport.

**KITCHEN / BREAKFAST ROOM
DOUBLE ASPECT SITTING ROOM
DINING ROOM
FAMILY ROOM : STUDY
FIVE BEDROOMS : 3 BATHROOMS
DOUBLE GARAGE WITH STUDIO ABOVE
PARKING FOR SEVERAL VEHICLES
LARGE GARDEN
EPC: D rating**

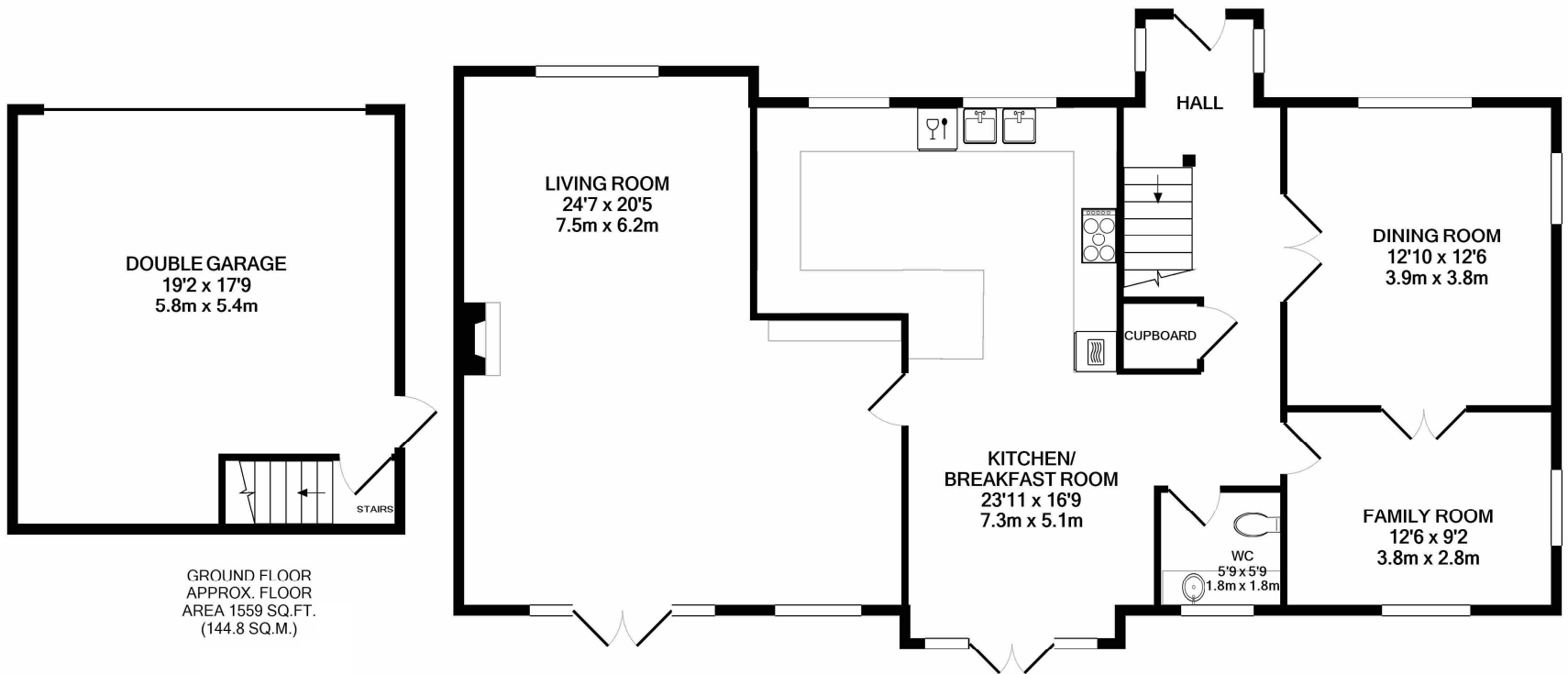
PRICE: £1,695,000 FREEHOLD



PIKE SMITH & KEMP
Thistle Cottage, Lower Road
Cookham, Berkshire
SL6 9EH

E-mail: cookham@pikesmithkemp.co.uk
Tel: 01628 532010
www.pskweb.co.uk

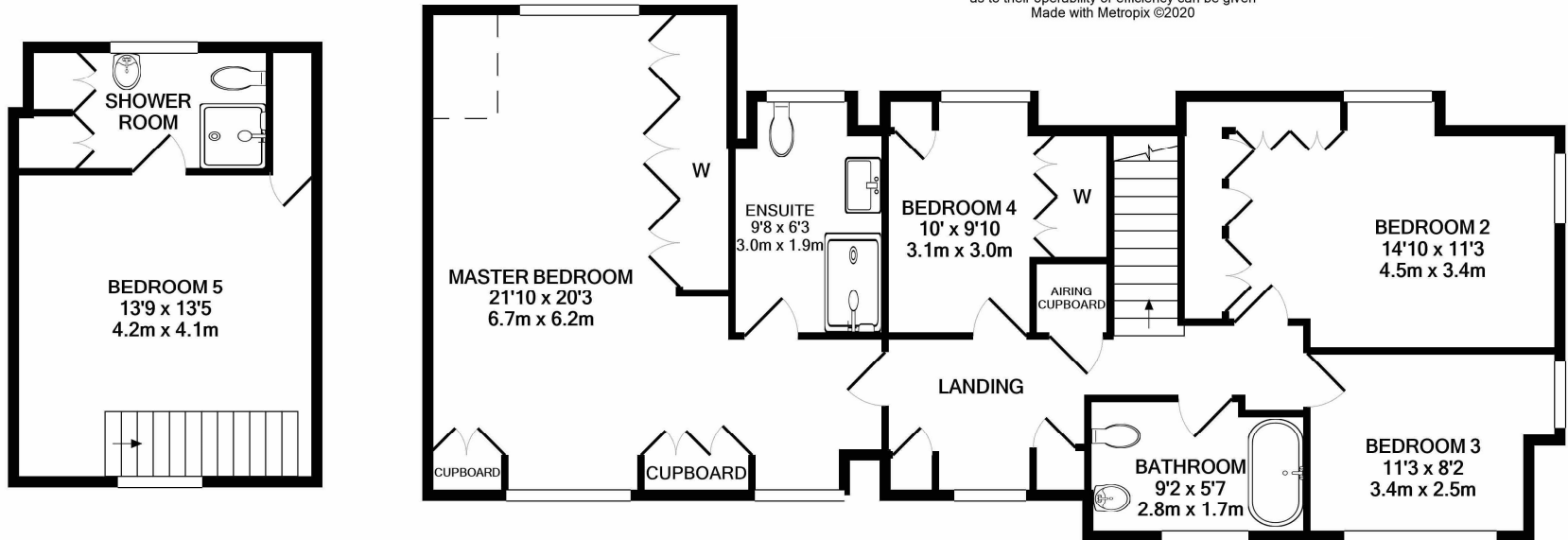




GROUND FLOOR
APPROX. FLOOR
AREA 1559 SQ.FT.
(144.8 SQ.M.)



Whilst every attempt has been made to ensure the accuracy of the floor plan contained here, measurements of doors, windows, rooms and any other items are approximate and no responsibility is taken for any error, omission, or mis-statement. This plan is for illustrative purposes only and should be used as such by any prospective purchaser. The services, systems and appliances shown have not been tested and no guarantee as to their operability or efficiency can be given
Made with Metropix ©2020



1ST FLOOR
APPROX. FLOOR
AREA 1202 SQ.FT.
(111.6 SQ.M.)

TOTAL APPROX. FLOOR AREA 2760 SQ.FT. (256.4 SQ.M.)





