



6 Sadlers Mews
Maidenhead
Price £465,000 Freehold

6 Sadlers Mews
Maidenhead
Berkshire, SL6 1TQ

Price £465,000 Freehold

EPC Rating: D
Council Tax Band: E

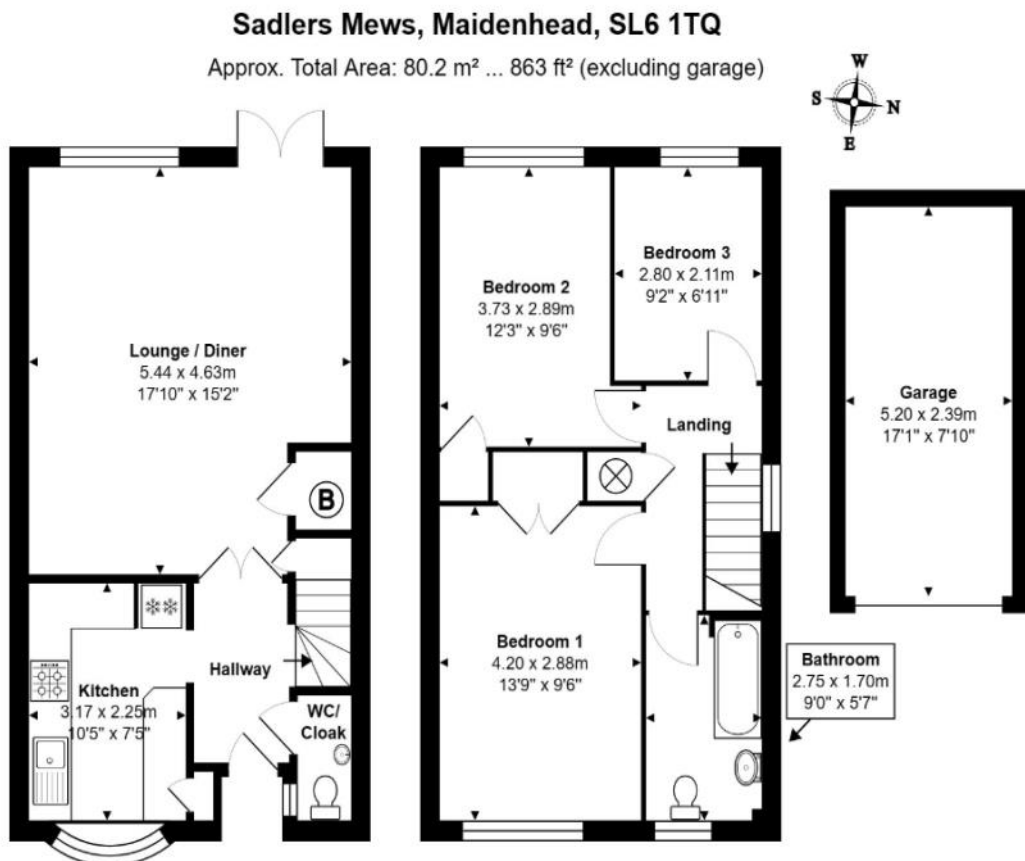
'Georgian style semi-detached house offered onto the market with no onward chain'

An attractive neo Georgian 3 bedroom semi-detached house within Oldfield School catchment in a small pedestrian courtyard located circa half a mile from the town and station a "stones throw" from Guards Club Park. The property further benefits from a walled west facing garden and garage in a block.

NO ONWARD CHAIN.

The M4 motorway are easily accessible providing access to Heathrow and Central London. Rail services to London Paddington are available from Maidenhead Station with an excellent service to London Paddington, serviced by the Elizabeth Line.

**LIVING ROOM: KITCHEN: THREE BEDROOMS:
BATHROOM: PRIVATE GARDEN: GARAGE**



Whilst every attempt has been made to ensure the accuracy of the floorplans contained here, measurements of doors, windows and rooms are approximate and no responsibility is taken for any error, omission or mis-statement. These plans are for representation purposes only.



■ AUCTIONEERS ■
SURVEYORS ■ P I K E ■ VALUERS ■
SMITH ■
KEMP ■
ESTATE AGENTS ■





DIRECTIONS: From Maidenhead town centre proceed east along the A4 and turn right at the traffic lights, just after the shops on the left, into Oldfield Road where The Farthingales will be found on the left hand side, turn left again where Sadlers Mews will be found in the pedestrian area on the left.



PIKE SMITH & KEMP

22 QUEEN STREET, MAIDENHEAD, BERKSHIRE SL6 1HZ

MAIDENHEAD@PIKESMITHKEMP.CO.UK

01628 621177