



RAY MEADOW
MAIDENHEAD



7 Ray Meadow, Maidenhead Berkshire, SL6 8PU

“A well proportioned individual family home presented in excellent order throughout”

An impressive 5 bedroom detached family home situated at the end of a quiet cul-de-sac on a small development located between the town and river and just a short stroll to the extensive acres of National Trust Land between Maidenhead and Cookham. The well presented and versatile accommodation is complimented by a detached double garage, off street parking for several vehicles and a secluded well maintained south facing rear garden.

The M4 and M40 motorways are easily accessible and Maidenhead mainline railway station has a direct service to Paddington (Crossrail 2022).

EPC Rating: C

GUIDE PRICE: £965,000 FREEHOLD



Pike Smith & Kemp
22 Queen Street, Maidenhead
Berkshire SL7 1HZ



maidenhead@pikesmithkemp.co.uk
01628 621177



Accommodation summary

Ground floor

- ENTRANCE HALL-

- KITCHEN/DINING ROOM

With French doors to rear garden

-FAMILY ROOM-

-LIVING ROOM-

Feature fireplace with gas fire

French doors to rear garden

- DINING ROOM-

Double aspect

-CLOAKROOM-

-UTILITY ROOM-

First floor

-FOUR BEDROOMS-

Two with en-suite bathrooms

- FAMILY BATHROOM -

Outside

-FRONT, SIDE AND REAR SOUTH FACING GARDEN-

Well maintained, mainly laid to lawn with shrub borders and large decked seating area and gravelled seating area to side.

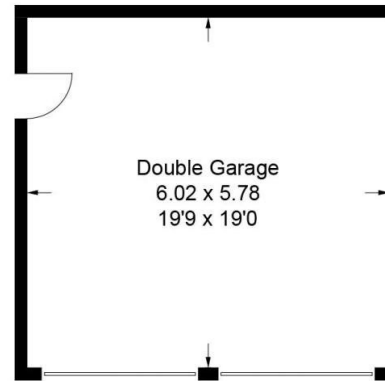
-LARGE DOUBLE GARAGE-

Off street parking and seating area

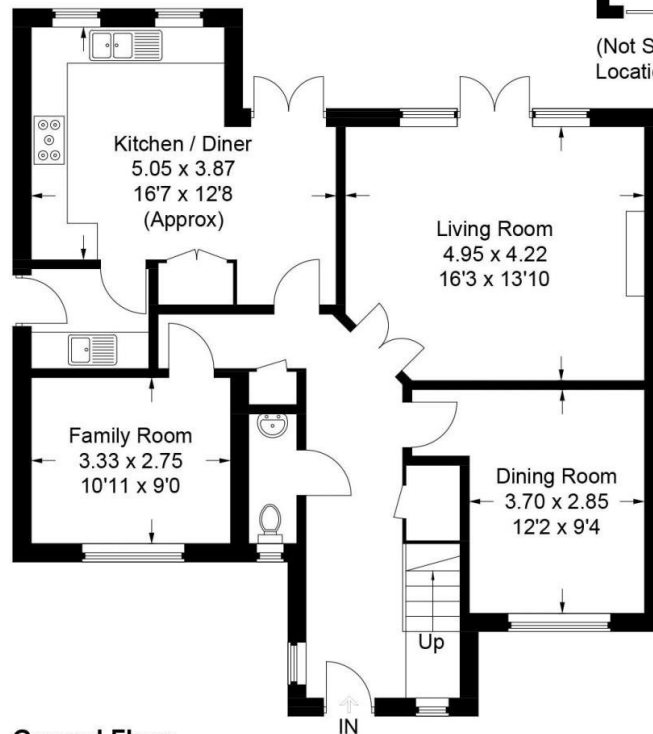




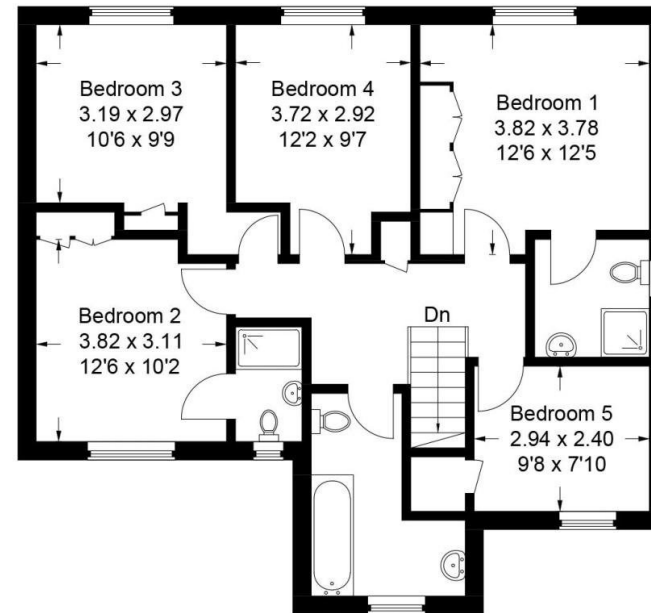
Approximate Gross Internal Area
 Ground Floor = 85.9 sq m / 925 sq ft
 First Floor = 80 sq m / 861 sq ft
 Double Garage = 34.8 sq m / 374 sq ft
 Total = 200.7 sq m / 2,160 sq ft



(Not Shown In Actual
 Location / Orientation)



Ground Floor



First Floor

This plan is for layout guidance only. Not drawn to scale unless stated. Windows and door openings are approximate. Whilst every care is taken in the preparation of this plan, please check all dimensions, shapes and compass bearings before making any decisions reliant upon them.







DIRECTIONS: Proceed east out of Maidenhead along the A4 Bath Road towards Maidenhead Bridge and bear left immediately before the Texaco petrol station into Ray Park Avenue. Continue along and on passing the second set of crossroads, bear left into Summerleaze Road. Continue to the end, bear left into Blackamoor Lane, take the first left into Lonsdale Close and the road then becomes Ray Meadow.