



Apartment 1, Rousbury
Maidenhead
Price £500,000 Share of Freehold

Apartment 1, Rousbury, Shoppenhangers Road Maidenhead, Berkshire, SL6 2PZ

Price £500,000 Share of Freehold

'A spacious contemporary apartment in a convenient location close to the town centre and railway station'

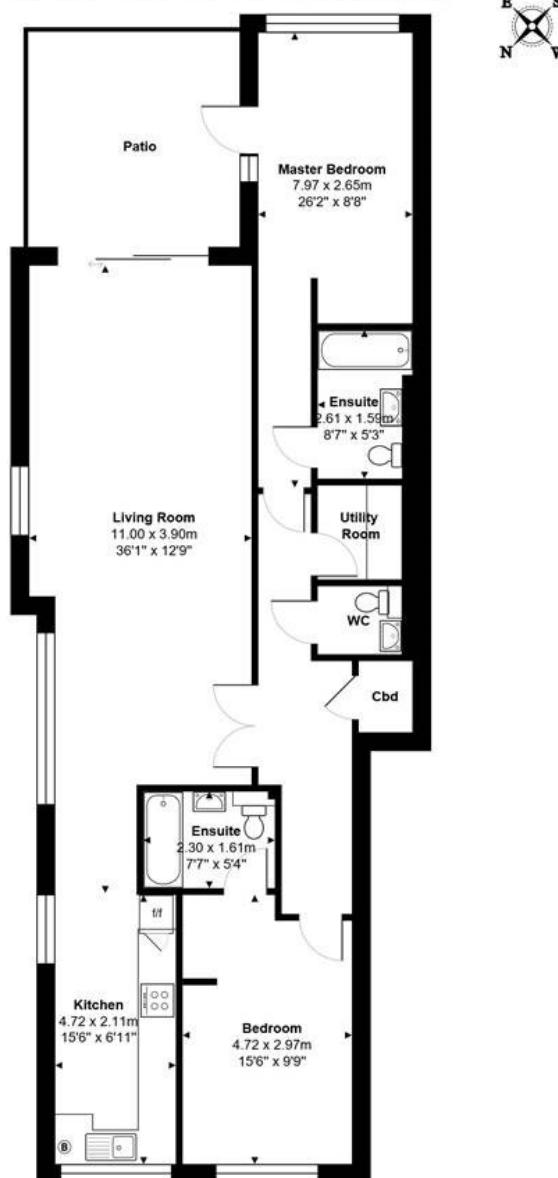
A recently constructed ground floor apartment with a high quality contemporary interior and large terrace located within a mile of Maidenhead railway station and town centre. The apartment benefits from two double bedroom suites with bathrooms, large living space, kitchen with appliances and oak flooring, there is a good sized communal garden backing onto Maidenhead golf course and residents' parking. NO ONWARD CHAIN

The M4 and M40 motorway are easily accessible providing access to Heathrow and Central London. Rail services to London Paddington are available from Maidenhead Station with an excellent service to London Paddington (Crossrail)

HALLWAY: LIVING ROOM: KITCHEN: CLOAKROOM: UTILITY ROOM: MASTER BEDROOM WITH EN SUITE BATHROOM: BEDROOM 2 WITH EN SUITE BATHROOM: PATIO: COMMUNAL GARDENS: OFF STREET PARKING

1 Rousbury, Shoppenhangers Road, Maidenhead, SL6 2PZ

Total Area: 103.7 m² ... 1117 ft² (excluding patio)







PIKE SMITH & KEMP

22 QUEEN STREET, MAIDENHEAD, BERKSHIRE SL6 1HZ

MAIDENHEAD@PIKESMITHKEMP.CO.UK

01628 621177