



Highfield Park
Marlow



21 Highfield Park, Marlow Buckinghamshire, SL7 2DE

‘A deceptively spacious 5 bedroom family home set in peaceful elevated position’

This stylish and contemporary semi-detached home offers generous open plan living spaces, thoughtfully designed for modern family life. Nestled in a quiet and sought-after residential area on the west side of Marlow, yet convenient for Marlow High Street, Higginson Park and the river Thames. The property benefits from 4 double bedrooms, a single bedroom/office, good sized garden backing onto open countryside, several patio areas, ideal for entertaining, a large workshop and off street parking.

Perfectly positioned for families, the home falls within the catchment area of the highly regarded Spinfield Primary School and Sir William Borlase’s Grammar School, both within walking distance.

A number of lovely Chiltern Hills walks are within a short distance yet the town centre is just over 3/4 mile with its excellent range of shopping, sporting and social facilities.

For commuters, Marlow train station connects to the Elizabeth Line via Maidenhead, offering fast access into central London. The M4 and M40 motorways are easily accessible, and Heathrow Airport is just a 25 minute drive away.

EPC Rating: D
Council Tax Band: F

£1,225,000 FREEHOLD



Pike Smith & Kemp
22 Queen Street
Maidenhead, SL6 1HZ
www.pskweb.co.uk
maidenhead@pikesmithkemp.co.uk
01628 621177

Accommodation summary

ENTRANCE HALL

OPEN PLAN SITTING ROOM/DINING ROOM with open fireplace

KITCHEN/BREAKFAST ROOM

CLOAKROOM

UTILITY ROOM

DOUBLE BEDROOM

First floor

PRINCIPAL BEDROOM WITH EN-SUITE BATHROOM

THREE FURTHER BEDROOMS

FAMILY SHOWER ROOM

Outside

GOOD SIZED LANDSCAPED GARDEN WITH VIEWS OVER OPEN COUNTRYSIDE

LARGE WORKSHOP

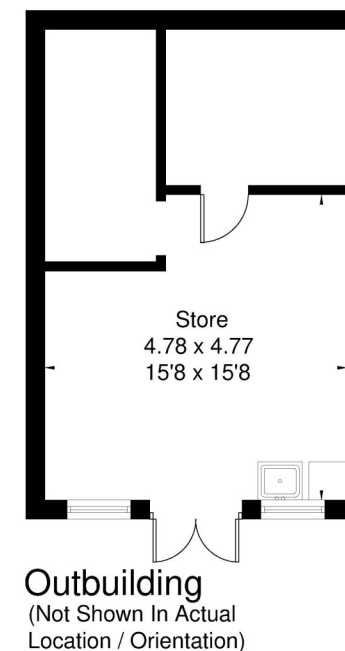
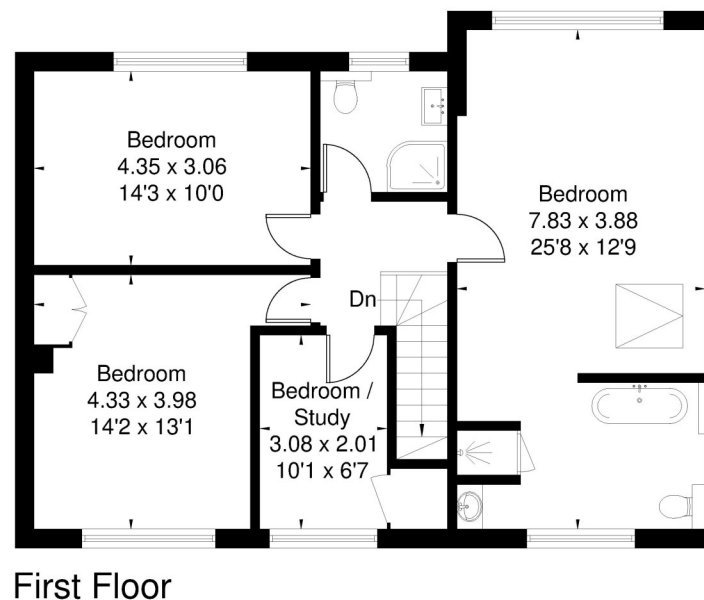
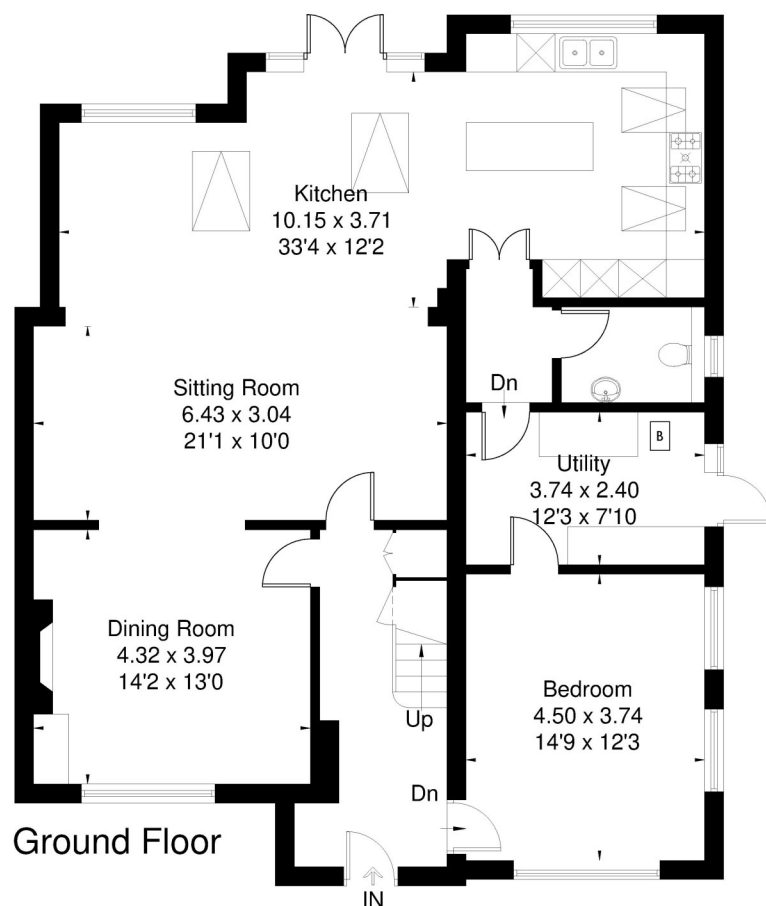
SEVERAL PATIO AREAS

OFF STREET PARKING





Approximate Floor Area = 203.2 sq m / 2187 sq ft
Outbuilding = 35.1 sq m / 378 sq ft
Total = 238.3 sq m / 2565 sq ft



This floor plan has been drawn in accordance with RICS Property Measurement 2nd edition.

All measurements, including the floor area, are approximate and for illustrative purposes only. @fourwalls-group.com #98124







■ AUCTIONEERS ■
SURVEYORS **PIKE & SMITH KEMP** VALUERS
■ ESTATE AGENTS ■